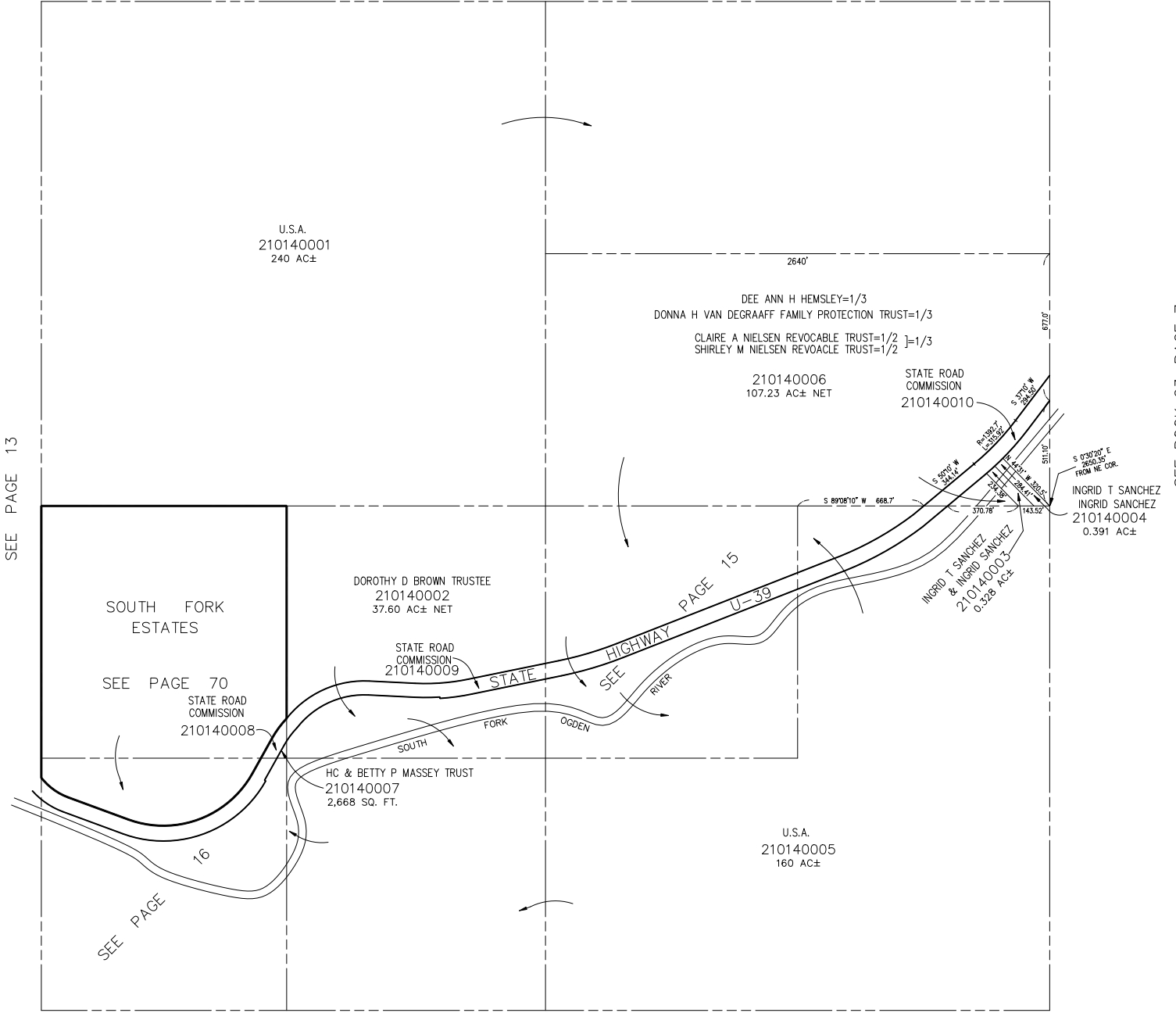


SECTION 12, T.6N., R.2E., S.L.B. & M.

IN WEBER COUNTY
SCALE 1" = 400'

TAXING UNIT: 520

SEE PAGE 1



SEE PAGE 13

SOUTH FORK
ESTATES

SEE PAGE 70
STATE ROAD
COMMISSION
210140008

SEE PAGE

DOROTHY D BROWN TRUSTEE
210140002
37.60 AC± NET

STATE ROAD
COMMISSION
210140009

HC & BETTY P MASSEY TRUST
210140007
2,668 SQ. FT.

DEE ANN H HEMSLEY=1/3
DONNA H VAN DEGRAAFF FAMILY PROTECTION TRUST=1/3
CLAIRE A NIELSEN REVOCABLE TRUST=1/2]=1/3
SHIRLEY M NIELSEN REVOCABLE TRUST=1/2

210140006 STATE ROAD
COMMISSION
107.23 AC± NET 210140010

INGRID T SANCHEZ
INGRID SANCHEZ
210140004
0.391 AC±

INGRID T SANCHEZ
& INGRID SANCHEZ
210140003
0.328 AC±

U.S.A.
210140005
160 AC±

HIGHWAY U-39
PAGE 15

SOUTH FORK OGDEN RIVER

SEE BOOK 23, PAGE 7